

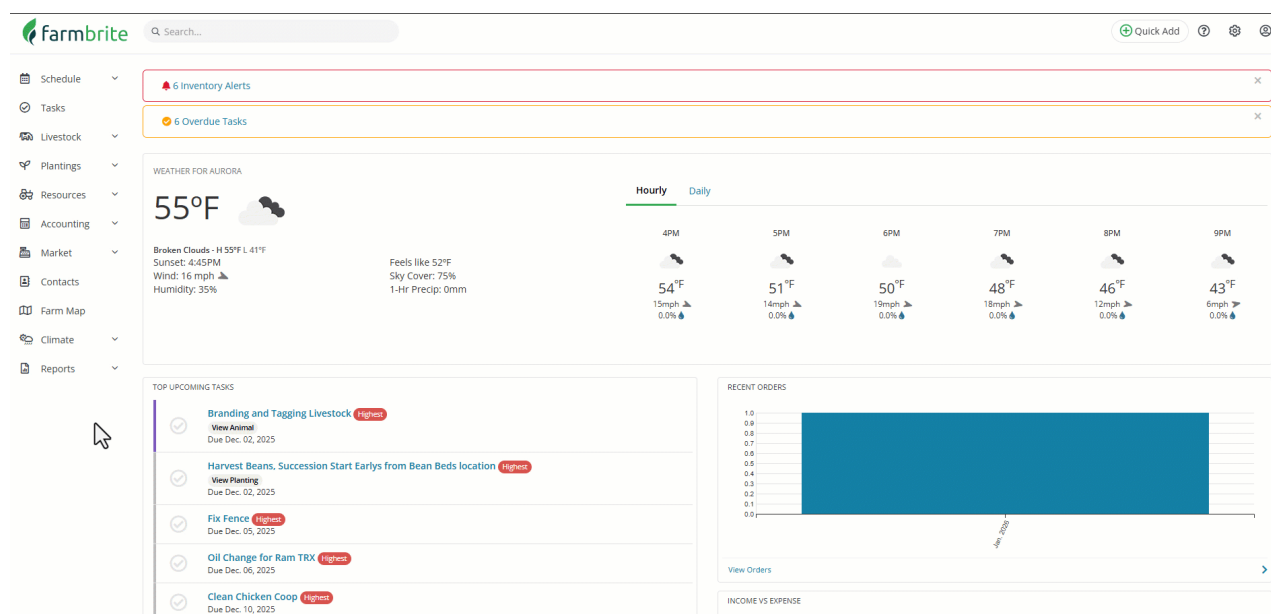
# Crop Variety Yield Comparison

Last Modified on 01/02/2026 3:43 pm MST

Knowing which of your crop breeds produce the best can be critical for your farm. If one type of pepper is getting you more hot sauce everyday, or a unique variety of tomatoes is thriving in your climate, you might want to invest in more of them, and phase out the others. You can use Farmbrite's [Crop Yield Comparison](#) report to see the yields from different plant varieties over time to help you make those important business decisions.

*Of course, to use this report you'll first need to add yields to your crops! You can [learn more about that process here](#).*

To run the report, navigate to My Crops and select the Yield Comparison. You'll see a menu for crop type in the top left, and a select for what type of report you'd like to see on the right. You can change any of these and click Update to refresh the chart and data.



Each selection in the Compare By menu will present slightly different data.

- [Relative Week](#) - This displays the yields by week, throughout the life of the planting.
- [Relative Month](#) - This displays the yields by month, throughout the life of the planting.
- [Relative Year](#) - The displays the yields by year, throughout the life of the crop.

*The "relative" aspect of the above selection means that it is normalized across all of the plantings of that variety. It uses the planting date to determine it's first week, first month, first year, etc. So regardless of what week, month, or year they were planted in, the software calculates it's yield relative to when it was planted.*

[Month of Year](#) - This displays yield by calendar month combined over years for all plantings of that variety.

[Year](#) - This displays yield by year combined over all years for all plantings of that variety.

## Questions that this report might help you answer:

- Which variety was more productive at certain times of the year?

- Did a change in nutrients at a certain week or month cause a noticeable uptick in yields?
- What week or month can I expect this variety to start producing?
- Did bad weather in a season cause a downturn in yield year over year?
- Does a certain breed ripen earlier than others, and thus we should prepare to sell and use it during that time?

[Reach out to us](#) if you have any questions or ideas for improvements on this report!

*Note: Farmbrite reporting data may be delayed up to an hour when compared to records you've created. If you have recently made updates but don't see them reflected on the report, give it some time and you'll see them soon!*

---