

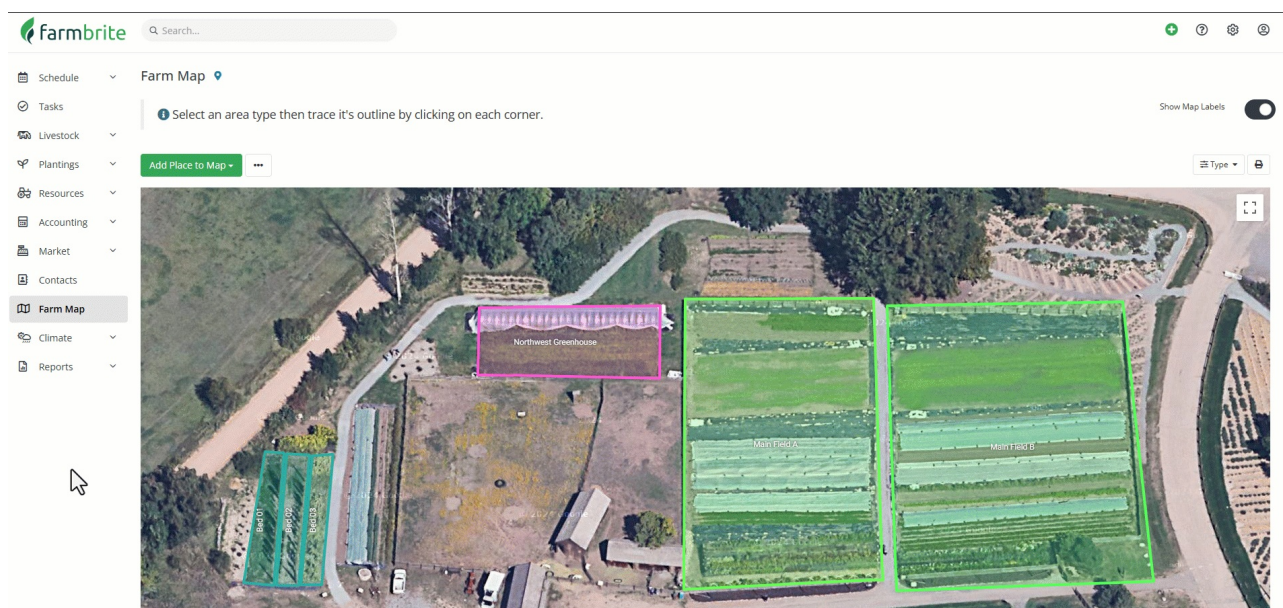
Recording Notes and Tasks from Your Map

Last Modified on 09/12/2025 6:44 am MDT

If you are out scouting your fields and need to make a quick note or record a task, you can accomplish that directly from your farm map! This quick shortcut might save you some time, and can help ensure you create all the notes and follow up tasks you need. Just navigate to your farm map before you start walking your fields to look for issues, and you'll be able to create the notes and tasks for all fields right from the same page.

To start, navigate to your farm map from the main navigation menu on the left. You'll be brought to your farm location by default, and will see a red pin placed in your current location (based on your device's GPS data). *Tip: Looking to change the default location? [Check out this article](#).* The pin will refresh automatically every minute, so you'll always know exactly where you are in the field.

As you scout your area and find issues to note, you can click on your mapped locations to bring up additional actions. From here, you can add [tasks](#) or [notes](#) to that location. These function in the same way you may be familiar with from using those features in different areas of the software. Be aware that this feature is available on any mapped location that is connected to a grow location, which can be your fields, beds, and grow enclosures.



After writing the note or creating the task, you are brought right back to where you were on the map and can continue your scouting. The notes and tasks you created are added to your Grow Location and can be viewed there. The tasks are also displayed on your main task list. Both of these are available on [reports](#) as well!

[Let us know if you have any questions](#) on how this feature can work for you!

