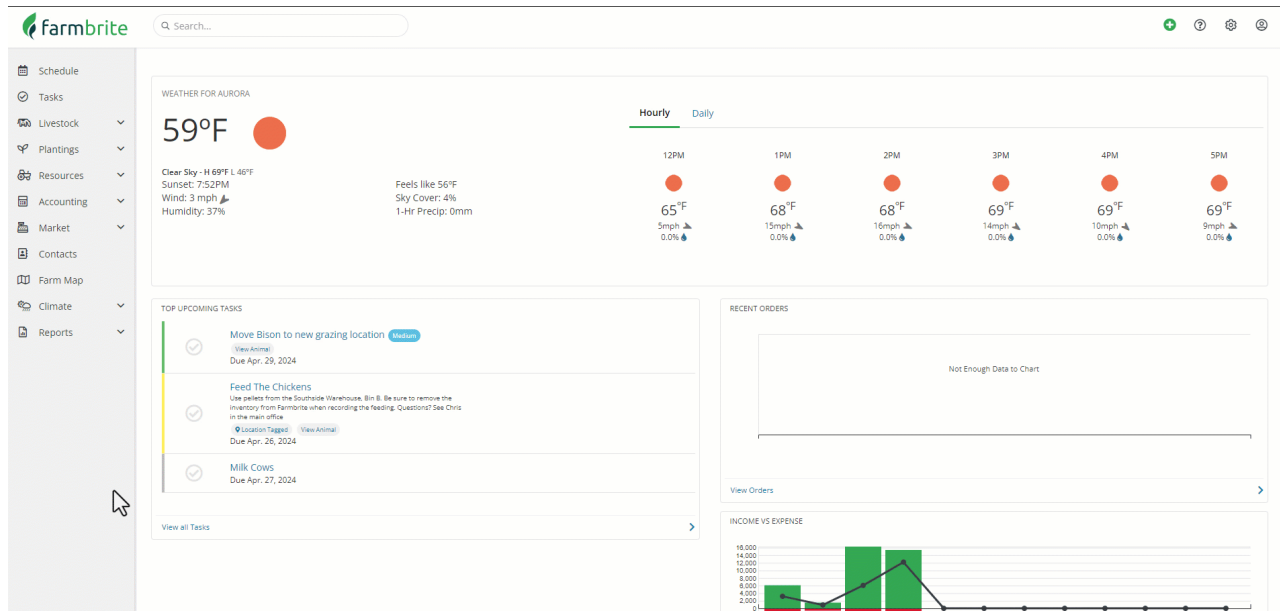


Livestock Reports

Last Modified on 07/23/2025 9:59 am MDT

Farmbrite comes preloaded with dozens of Livestock reports. You'll see inventory reports based on status, breeding and reproduction success summaries, feed performance comparisons to weight gained, and a lot more. Many of these reports can be customized to include your own filters, fields, and charts if you'd like. Browse through what's available below, and [let us know if you have any questions or new report requests](#).



Breeding and Reproduction

Births - A list of animals that were birthed in the last 2 years with details about their birth date, birth weight, and genealogy.

Breeding - All breeding records from your female animals in the last year, with their age, weight, breeding date, sire, cost, and status.

Breeding Surrogates - This performance report shows all female animals that have had a breeding record using the embryo transfer method. You'll see how many times an embryo transfer was attempted and how many were successful with a conception rate percentage. Failures and failure rates are shown too, along with the average time between births and their average birthing ease. This report can help you decide what surrogates perform best and might be suitable for future breeding.

Dam Reproduction Performance - This report is similar to the Surrogate report above, but is not limited to embryo transfer breeding records. IN addition, it will show you total offspring over the past two years and their average litter.

Drying Off - A list of female animals who have recently given birth, with their last offspring birth date and last weaning.

Due Dates - Animals that are currently exposed or pregnant, along with their expected due dates for the pregnancy.

Eligible Females - Any female animal that is currently open or exposed but not confirmed pregnant. You'll

also see their age and last weight to help you determine breeding suitability.

Maternal Performance - This comprehensive report shows you all female animals with key breeding performance data. You'll see the total number of offspring they've birthed and an average birthing ease. The offspring average weight and BCS is included too, with additional details on survival rates and those that were culled or deceased.

Pregnancy Checks - Almost all animals are currently pregnant or exposed with their breeding date and expected due date.

Reproduction Summary by Type - This report shows you cumulative totals by animal type. You'll see how many total dams of that type were bred and how many total offspring they had over the past 2 years. You'll also find an offspring rate, which is the total number birthed divided by the number of dams that birthed new animals.

Grazing

Fields Being Grazed - This report is a shortcut to the Grazing section, showing all the fields that are currently being grazed.

Grazing History - Each grazing move in or out of a location is shown here. Each move shows where they were moved from and how long they were in the location.

Grazing Summary - This report is grouped by location, showing all the grazing moves in and out of each of your grazing fields. This also displays the animal units, which are used to calculate the average animal days per acre

Current Animal Location - Use this report to see where each animal is, whether that is a building, enclosure, or grazing location.

Location History - See all of the moves in and out of any location, including buildings, enclosures, and grazing locations.

Health and Wellness

Feeding History - This is a complete history of every feeding for all of your animals. You'll see what they were fed, how much of it, and the total cost associated with it.

Measurements - This report is grouped by animal type. It displays all of your animals, with their last weight, average daily gain, and feed conversion ratio. You'll also find additional measurement details like height, condition score, and frame score.

Treatments and Vaccinations - A full list of all treatments given to your animals in the past year. You can customize this to get a different range if you need. You'll see what was given and when, along with how much. A cost is displayed, which compiles the cost of the inventory used and any additional accounting expenses added to the treatment. Retreat and Withdrawal dates are also shown.

Upcoming Treatments - A list of any livestock treatments that have a retreat date supplied and a scheduled booster are shown here.

Upcoming Withdrawals - Similar to the upcoming treatments, this shows you any treatments that have been applied that are still within the withdrawal period for the medication.

Livestock Inventory

Deaths and Losses - A list of any animal that was marked culled or deceased within the past 2 years.

Inventory Summary - This report is grouped by animal type and shows you the last five years of births, purchases, sales, deaths, and butchered records. This gives you a "big picture" overview of your herds, with totals for each sex as well.

Purchases - Any animal that was purchased in the last two years will be shown here. The date they were purchased and the purchase price are included as well.

Sales of Livestock - Any animal that was sold in the last two years will be shown on this report. The date they were sold, the age at which they were sold, who they were sold to, and how much was paid for them are also included.

Weaning - Shows you any animal born within the last 18 months and includes their target weaning date.

Yearlings - A list of any animal that is between 1 and 2 years old, with their weight, sex, weaning date, or targeted weaning date.

Production Performance

Accounting Transactions - You'll find any accounting transaction that is associated with a livestock record here. This might be sales or purchases, or just everyday expense and income. The amount is displayed, as well as the category and payee/customers.

Feed Performance - This is a comprehensive performance report to help you see how your feedings are translating into weight gained. Every animal that has been measured or fed in the past year is shown here, with their last weight. You'll see the total amount fed and weight gained over the date range supplied, and those numbers are divided to get your Feed Conversion Ratio (FCR). For any animal that you've yielded from, you'll also see a yield ratio. This takes your total yield and compares it to the weight gained, showing you how your food is translating into yielded harvests.

Input History - A list of all input records and costs added to your animals in the past year. You might find things like bedding, enrichment items, and other non-feed/non-medication items here.

Livestock Breakeven - Livestock records have a concept of "breakeven", which is the amount you've spent on expenses for the animal or plant, along with the income you've generated. This is similar to the profit and loss, but it also takes into account the value of inventory items used in feedings and inputs in the total amount spent on the animal.

Notes - A full list of any notes you've written on livestock records over the past 2 years.

Yield History - This report shows all of your yield records from the past 3 years. This includes the amount harvested, its grade, the trace/batch number associated with it, and the animal it came from.

Yield Details by Day/Month - These reports show you every animal you harvested from within a date range, with the total harvested, lost, and the net amount for every day or month. A total with the estimated cost to produce and estimated revenue is also shown. The daily report might help you track yields for egg-laying chickens or milk-producing cows.

Yield Summary by Type - This is similar to the Yield Details reports, but instead of individual animals, you'll

see totals by animal type. This can help you see how productive your animals are overall as a group.

Note: Farmbrite reporting data may be delayed up to an hour when compared to records you've created. If you have recently made updates but don't see them reflected on the report, give it some time and you'll see them soon!
