

# Adding a Planting

Last Modified on 05/17/2022 6:39 am MDT

Under your grow location you will find lots of places to enter your crop information and specific information about your beds and fields. The more information you enter here the more Farmbrite will be able to calculate for you.

## Details tab

The details tab gives you the information about your bed or field. You can change the name your bed here if needed. You will also find the field size here. This can be mapped on the next tab to get a very specific size. You can choose if this is a field or greenhouse here. You also choose your layout type here.

## The layout type

You can choose between 4 types of layouts: Each will change the way your layout and how you enter information.

Planted in beds: Choose this type if you plan to plant crops in beds with specific lengths and widths. This is also where you would use succession and companion planing with specific spacing. Mostly used for market gardens but can also be used for orchards.

Cover crop: This type of crop is broadcast seeds over a plot of land. Use this type of planting for cover crops like clover or alfalfa.

Row crops: This type of crop is planted in rows, usually all in one monoculture such as corn or soybeans. Usually by a machine or tractor.

Other: This type of layout can be used for specialty growing methods such as trees and berry bushes planted in pots, aquaponics or hydroponic trays.

The screenshot shows the 'New Grow Location' form in the Farmbrite application, specifically the 'Details' tab. The form is titled 'New Grow Location' and has four steps: 1. Details, 2. Map Location, 3. Add Plantings, and 4. Complete. The 'Details' tab is active. The form contains the following fields and options:

- Name:** A text input field with the example value 'Example: Northwest Field'.
- Internal Id:** A text input field with the example value 'Example: F001'.
- Location Type:** A set of radio buttons with options: ☒ Field, ☐ Greenhouse, ☐ Grow Room, and ☐ Other.
- Planting Format:** A section with four selectable options, each with a representative icon and a brief description:
  - Planted in Beds:** Represented by a grid icon. Description: 'Distinct number of beds for diverse crops. Often 100' length. Example: Carrots, Tomatoes, Spinach, etc. Plantings based on row length and count.' This option is currently selected with a blue border.
  - Cover Crop:** Represented by a solid square icon. Description: 'Complete crop coverage or growing location. Example: Alfalfa, Hay, Rye, Wheat, Pasture, etc. Planting coverage based on location area.'
  - Row Crop:** Represented by a grid of dots icon. Description: 'One crop planted in rows wide enough to be cultivated by machinery. Example: Corn, Soy Beans, Hemp, Potatoes, etc. Planting coverage based on location area.'
  - Other:** Represented by a plant icon. Description: 'Any alternative growing method. Example: Shadblow, aquaponics, trays, etc. Plantings based on specified quantity.'
- Area/Size (Acre):** A text input field with a help icon.
- Growing Status:** A dropdown menu with 'Active' selected.
- Light Profile:** A dropdown menu.
- Description:** A large text area for additional notes.

At the bottom right of the form, there are 'Cancel' and 'Save' buttons.

Under that you will enter the status of your field (fallow, leased, other), the light profile (Full sun, part sun, etc.) and the description of your field. These data fields are more for informational purposes instead of calculations. Because of that you can choose not to put anything in these if you want.

If you are planting in beds, you'll also define the number and size of the beds in this field. Farmbrite will

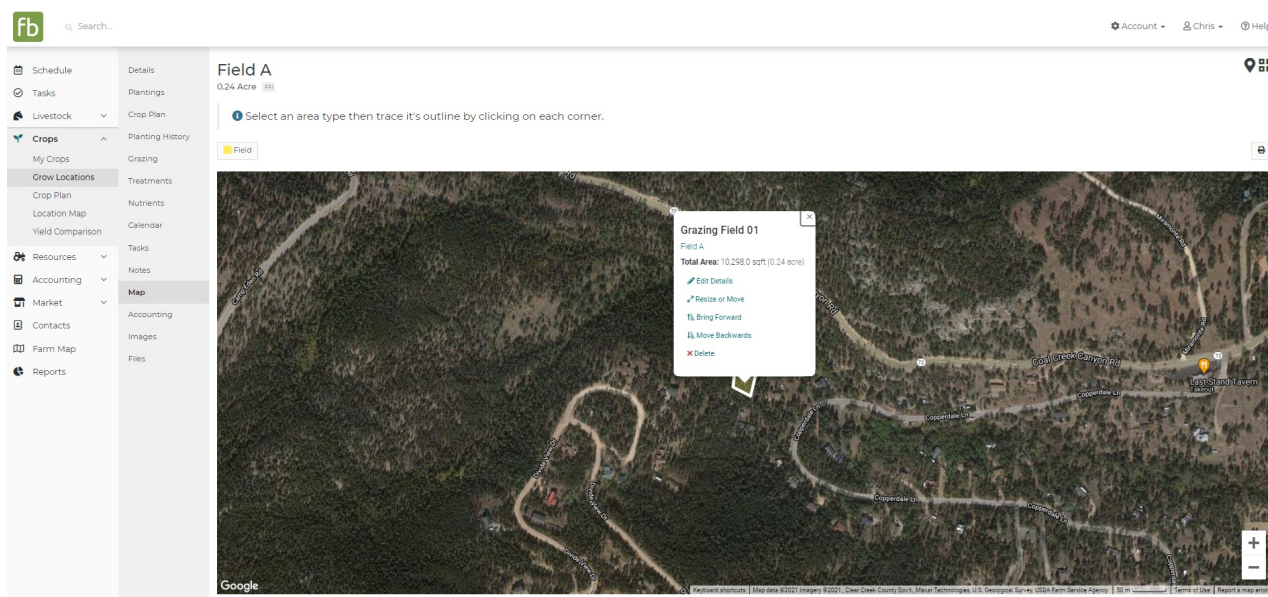
default to 100ft rows that are 3ft wide, but you can edit this to be whatever size beds you have. These dimensions are used to calculate the number of plants that can fit in the bed based on recommended plant spacing for your different types of crops.

If grazing animals on your land you can add a days rested number to help you rest that land to let the grass grow back.

## Map of your field

This tab gives you specific mapping information on your field. Once you've entered your address you will see a Google satellite map. Use the scrolling tools to map your acreage.

(Note: Sometimes this does not quite map correctly. We apologize for that. You may have to scroll over to find your farm. We are using Google images and have no control of the mapped address.)



## Crops Tab

The crops tab is where you will be able to get a ton of information on growing your crops. By being very specific about the information you enter here, you can start to see calculations, estimates and add tasks around those important dates. The more data you enter the more Farmbrite can help you calculate.

Once you have your crop layout determined (shown in the steps above) you can then start entering your crops in a specific spot on your farm. In the example below I am showing a two different setups; one for a single planting that is transplanted and then another for crops planted in beds for succession planting.

## Add a New Crop

Make sure you have added your crop types before you go to add them to a bed. Add all the information from the seed packets, add new type of blended of seeds of your own creation, or use one of the pre-loaded crops in Farmbrite.

Use the '+ Add Crop' button on the right to add crops that you have already created in the "Plants tab" to a

bed. If you haven't done this step use the 'New crop' button at the top of this page to create new crops so you can add them to your bed rows.

Use the blue pencil icon to edit the bed or delete with the red X button. You can always modify the information you've entered by clicking the 3 dots at the end of the row. To edit your plant.

By clicking on the black arrow beside the bed number, it will expand the bed view so you can see the plants that are planted here.

As you can see, there is a lot of functionality on this page. Just go slow as you're setting this up to make sure you're entering information in all the places you need. And again, the more information you enter, the more specific Farmbrite can be for you in your calculations and estimated harvests.

CROP TYPE	PLANTED	EXPECTED
<strong>Peppers (Hot)</strong>		
Peppers (Hot), Inferno <small>REN</small> <small>Capsicum annuum, Hot</small>	-	-
Peppers (Hot), Thai Dragon <small>REN</small> <small>Capsicum annuum, Hot</small>	1.0 acre <small>Southeast Deck Planter</small>	Expected Sep 15, 2021 0 of 1 Harvested

## Setting up plantings and succession plantings

Now that you've entered your crops and your grow locations you can now add plantings to a grow location. Below are a few different ways to add plants to Farmbrite. As plants grow differently in every zone this area has some calculations which we will describe through the following examples.

### Succession plantings

If you are growing for market you may have more than one planting in a bed per season. You can do this by adding a second planting below the first. By adding different dates to this planting it will notify you of when to plant and when to harvest. These dates will show up in your calendar and task tabs. You can add one crop if you choose and more after that.

My first planting will be on January 1st which I will harvest on March 17th. Then as I pull out that harvest on March 17th, I will plant my next planting on the same day to be harvested on April 26th. Farmbrite will give you a notification that there is not any SQFT left in this bed but since you will be pulling out the plants to put in others that is technically not true. This feature can help you though if you are companion planting and want to use every square inch of your bed.

**Greens Bed**  
0.84 Acre

**2022 Planting Year** | Future Plantings | Currently Planted | Harvested

Type	Amount	Start	Harvest
Lettuce, Head, Green (Bed: O3)	300.0 sqft ~ 300 Plants	Plant Jan. 01, 2022 Direct Sow   Seed Started	Harvested on Mar. 17, 2022 (5 days late) 100 of 300 Harvested
Arugula, Oak Leaf (Bed: O3)	225.0 sqft ~ 3,600 Plants	Plant Mar. 17, 2022 Direct Sow   Seed Started	Expected Apr. 26, 2022 0 of 225 Pounds Harvested

Buttons: + Add Planting to Bed

Other beds: Bed: O4 (275 sqft free), Bed: O5 (275 sqft free), Bed: O6 (300 sqft free), Bed: O7 (300 sqft free)

Since all the information I need about this plant is in Farmbrite- from the seed packets to my market prices, Farmbrite is able to show my harvest dates, market value and percent harvested.

## Entering Yield

Once you harvested a crop you can enter yield. You can click on "Add to inventory" and this will automatically enter the amount you've harvested into your resources tab.

Use the 'Current Plantings', 'Future Plantings' and 'Harvests' tabs to plan your season and get a good picture of your season, what plants need to be planted and what needs to be harvested.

## Adding seed start dates, planting dates and harvest dates.

Adding information about when you are planting seeds is a vital part of your crop operation. Based on the information that you enter into your crop, Farmbrite works to help you calculate your days to plant, transplant and harvest your crops.

In the following example I am going to plant a row of tomatoes. Starting them in trays, then transplanting when it's warm enough in my zone to grow them outside. Farmbrite will use this information to calculate the dates for planting.

\*Starting before last frost in my zone is 7 weeks


\*Days to emerge: 8 days

\*I will be starting in trays and transplanting into the ground

\*70 days to Maturity. Making sure the information you enter into Farmbrite is based on the type of planting you will be doing (transplanting, direct sow, or other as the days to maturity will be different.)

New Planting Details

1 Crop Type & Location
2 Planting Details
Complete


**Tomatoes, San Marzano**  
Market Garden - Bed: O6 TOSA-FNE-B06

Planting Details

Start MethodStart in Trays, Transplant in Ground

Growth StageSeed Started

Seed Started Date02/14/2022

Planting Date05/15/2022

Plant Spacing30.0 in

Row Spacing30.0 in

Planted Row Length100.0 Feet

Rows1

Number Planted40

**Planting Info.**  
250 sqft (Approx.) - Planted in 1 rows (40 per row)  
30.0 inches between plant, 30.0 inches between row.

Harvest Plan

Planned Harvest Date07/24/2022

Expected Harvest Amount250.0 Pounds

In this example the dates are as follows:

**\*Seed start date: 02/14/2022** (*Seeds are started inside so that they can get an early start*)

**\*Transplanting into the ground on 05/15/2022** (*After the last frost date in my zone*)

**\*Harvesting 07/24/2022** (*70 days after the day I planted in the ground*)

Notice that Farmbrite is using the date I transplanted as the date to calculate the days to maturity. The dates provided are all estimates and can be changed as needed for your growing methods.

You might also want to check the box at the bottom of the Add Planting pop up to Add/Update Tasks for Planting Dates. This sets tasks for each of the dates outlined above - starting the seeds, transplanting the seedlings, and harvesting the crop. The [Task List](#) is a powerful tool to keep you on top of chores and important activities, so adding these planting dates here will help you remember when it's time to plant, transplant and harvest.

Seed Type: Heirloom

Lot Number: 5446

Number Of Trays: 4

Tray Numbers: 521, 522, 523, 524

Starts Per Tray: 12

☒ Add/Update task(s) for planting dates

Cancel Save Planting

Tomatoes, Roma

Bed: 06 806 0 sqft free

## Days to Maturity on seed packets

The days to maturity is the average number of days from seeding date to harvest, within a specific crop group. If this is a transplanted crop, take the average the number of days from the transplant date on most crops. If you're not sure if a crop is direct-seeded or transplanted check the growing information on your seed packet for more details. If a crop can be both direct-seeded or transplanted, the days to maturity usually refers to direct seeding.

Days to maturity (DTM) is calculated in the following way in Farmbrite.

- If planting is direct sow, then harvest date = seed start date + DTM
- If not direct sow, then harvest date = planting date + DTM

## Calculating Plant Count and Area

When you create a planting, Farmbrite will use the dimensions of the grow location and the recommended plant spacing to calculate how many plants will fit in the area. In our example below, we are planting lettuce, which requires 1 square foot spacing per head (12 inches x 12 inches). Our bed has 2 rows, which are each 10 feet long. That gives us a total of 20 square feet (10ft x 2ft), which means we can plant 20 heads of lettuce in this bed. This is automatically calculated in the Number Planted section. While your beds default to 100 feet rows, be know that your farm may differ from that, and you can define your bed size and row length when creating your grow location.

Plant Spacing: 12.0 in

Row Spacing: 12.0 in

Planted Row Length: 10 Feet

Rows: 2

Number Planted: 20

**Planting Info.**  
 20 sqft (Approx.) - Planted in 2 rows (10 per row)  
 12 inches between plant. 12 inches between row.

## Planting Guide

The planting guide gives you an overview of your beds and what will be planted in them at what time. The information that you entered from the seed packets will transfer here. This can be printed and given to your field hands during planting.

## Grazing

The grazing tab shows what livestock you have grazing on a field.

## Treatments

The treatments tab is where you record any beds/plants that needed to be treated. This shows the treatments used on your orchard, your beds, or your fields.

## Nutrients

If amendments were used on your field or bed you can record them here. Enter the type, NPK, application method and date applied.

## Calendar & Tasks

The calendar and tasks show what events you have coming up for a specific bed or field. You can add this to specific beds or fields. For instance if you need to add more fertilizer to your garlic during it's growth cycle, this is where you would schedule that. It will show up on the main calendar and tasks.

## Notes, Images and Files tabs

The bottom 3 tabs are pretty self explanatory. You can enter notes about specific plants or beds, as well as images and files. The images are useful if you have a specific type of bug you have a question about that was on that plant or a spot that you want to research and document in Farmbrite. The documents that you might want to keep here are soil records or water samples.

---